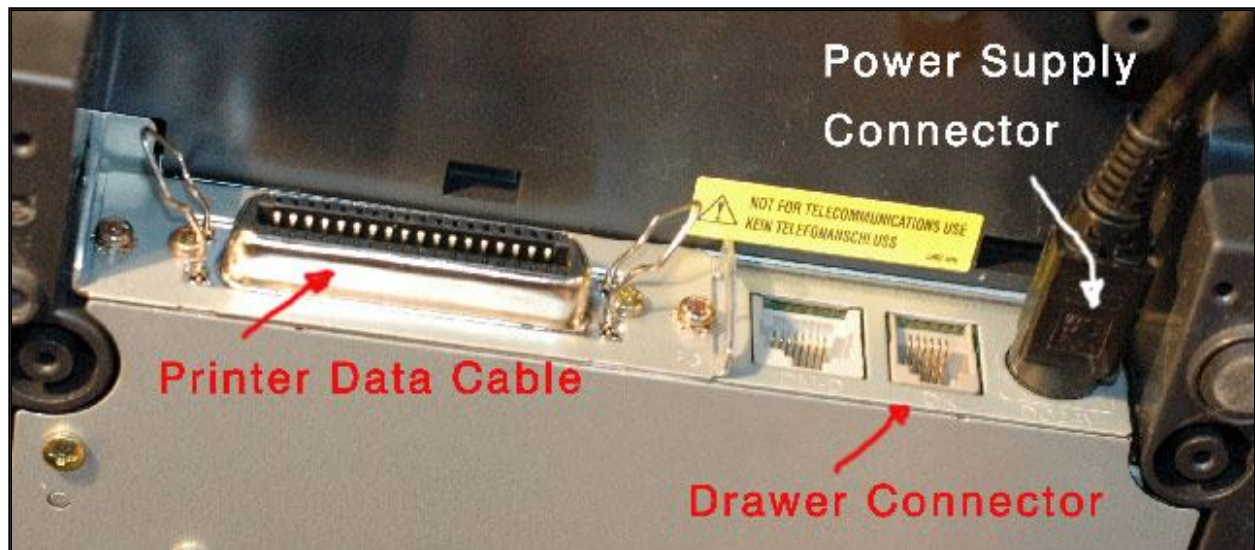


Epson Receipt Printer Connection

This information explains how to set up your Epson receipt printer. The receipt printer endorses checks, validates documents, prints receipts and controls the opening of the cash drawer. This information applies to the TMH5000 and TMH6000 models.

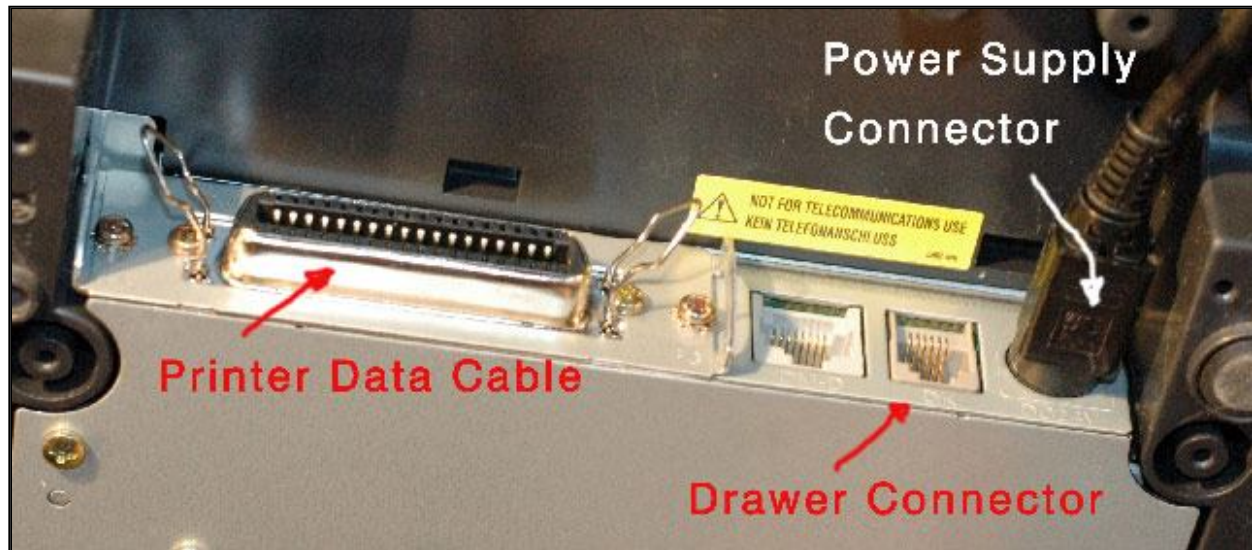
The first step is to connect the printer to the computer with a parallel cable. On the bottom of the printer you will find a standard Centronics parallel printer data connector. This is the connector on the far left in the picture below.



After plugging in the printer data cable, flip the metal clips on each side of the connector up into the sides of the printer cable plug to insure that the cable does not pull loose as the printer is moved around the counter. The other end of the printer cable should be connected to the PC workstation printer connector on the back of the PC.



There are three more connectors to the right of the printer data cable connector, as shown in the picture below. The one just to the right of the printer connector is for a customer pole display. This plug will have no connection.



The next plug, labeled DK, is for the cash drawer cable. The connector and cable look just like a standard telephone cable. Don't use a standard phone cable because it will not work properly and could damage the printer. One end of the supplied cash drawer cable should be marked "To Cash Drawer". This means exactly what it says. Plug the OTHER end into the DK connector on the printer and the end marked TO CASH DRAWER into the cash drawer.

Note: One of the most common errors is to install this cable with the wrong end plugged into the printer. The drawer will not open if it is installed backwards. To add insult to injury, for a few months a few years ago we were getting these cables from the manufacturer with the WRONG END marked "To Cash Drawer".

If your drawer does not open, try reversing the cable, even if it seems it will be backwards. We have not seen this problem in some time, but if you have one of these older cables this sometimes works.



The connector on the far right is labeled DC24V is for power supply. This plug is round and connects to the black power cable from the power supply.



Epson Printer Driver Setup

In 20 (or so) Easy Steps

After connecting the printer you need to install a printer driver. This insures that the data sent to the printer is properly routed to your parallel port and also causes the 'plug-and-play' messages that Windows sometimes displays when it sees new hardware to stop appearing. Most printing functions are under direct control of the RASWIN program and don't really require the driver..however, eliminating the plug-and-play messages is reason enough to install the proper printer driver.

Install Driver Files

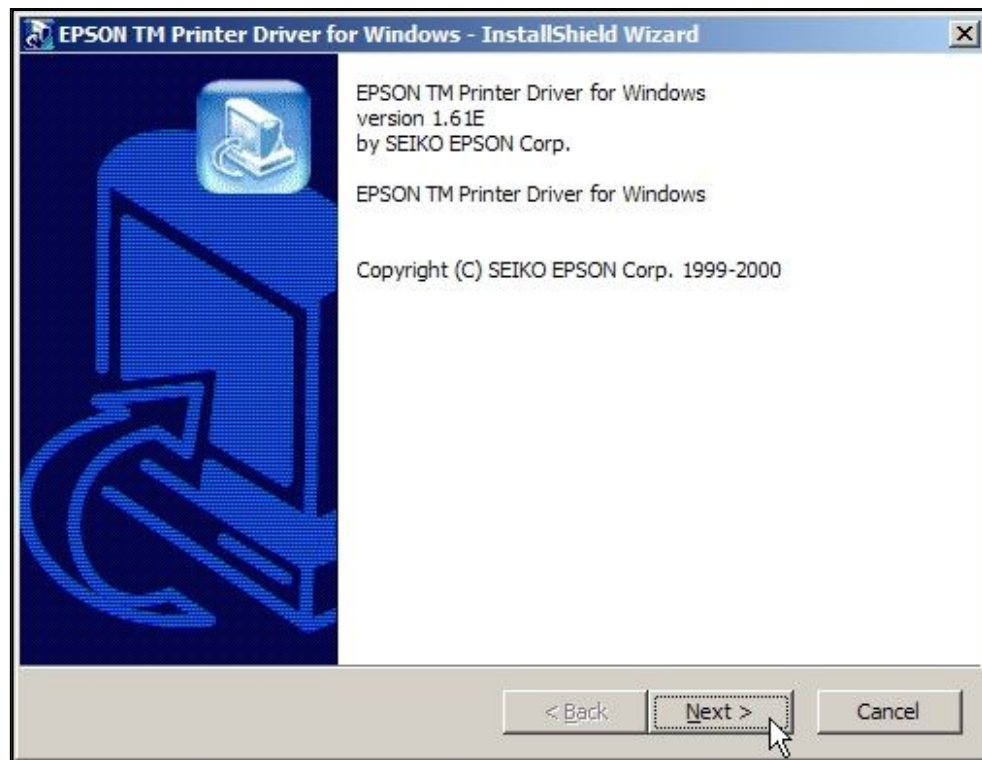
The first step for installing the driver is to locate the file TDR161E.EXE, which is a self-extracting setup file. This file can be found in the

`C:\program files\quadrant\raswin\extra_utilities`

directory. Use the Windows File Browser to locate the file and double click on it.



The following screen will appear. Click Next.



Accept the suggested location [C:\Tmdrive] for the files to be saved. Click NEXT



The program will then extract the files to the specified directory. Click on FINISH.
(But you're not finished! Those darned jokers at Epson!)

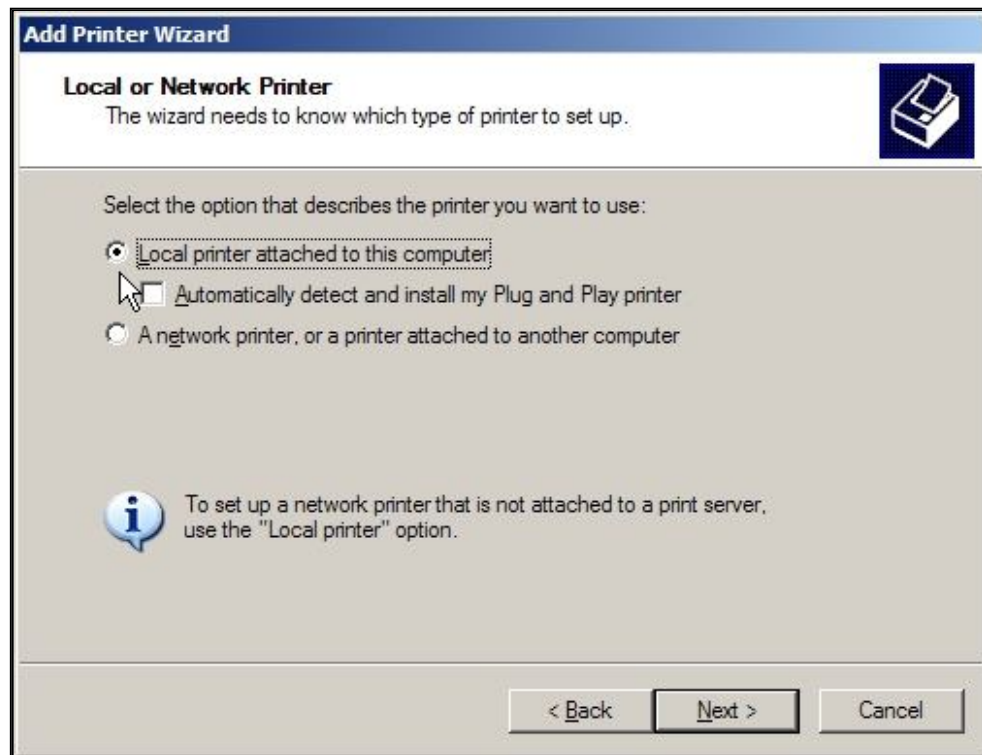


Add Printer via Control Panel

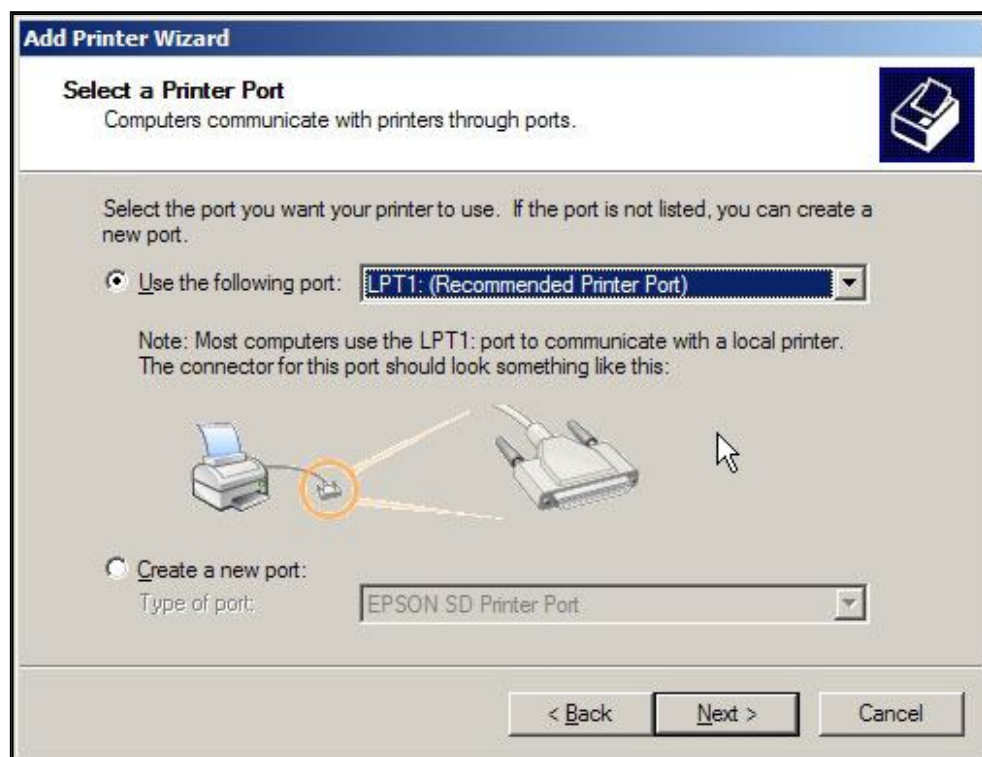
Using the Windows Control Panel, select the add printer menu option. A screen similar to the one below should appear.



Since your printer is connected directly to your computer check the LOCAL PRINTER option, and uncheck the "Automatically Detect and install my Plug and Play Printer" check box. Then Click on NEXT.



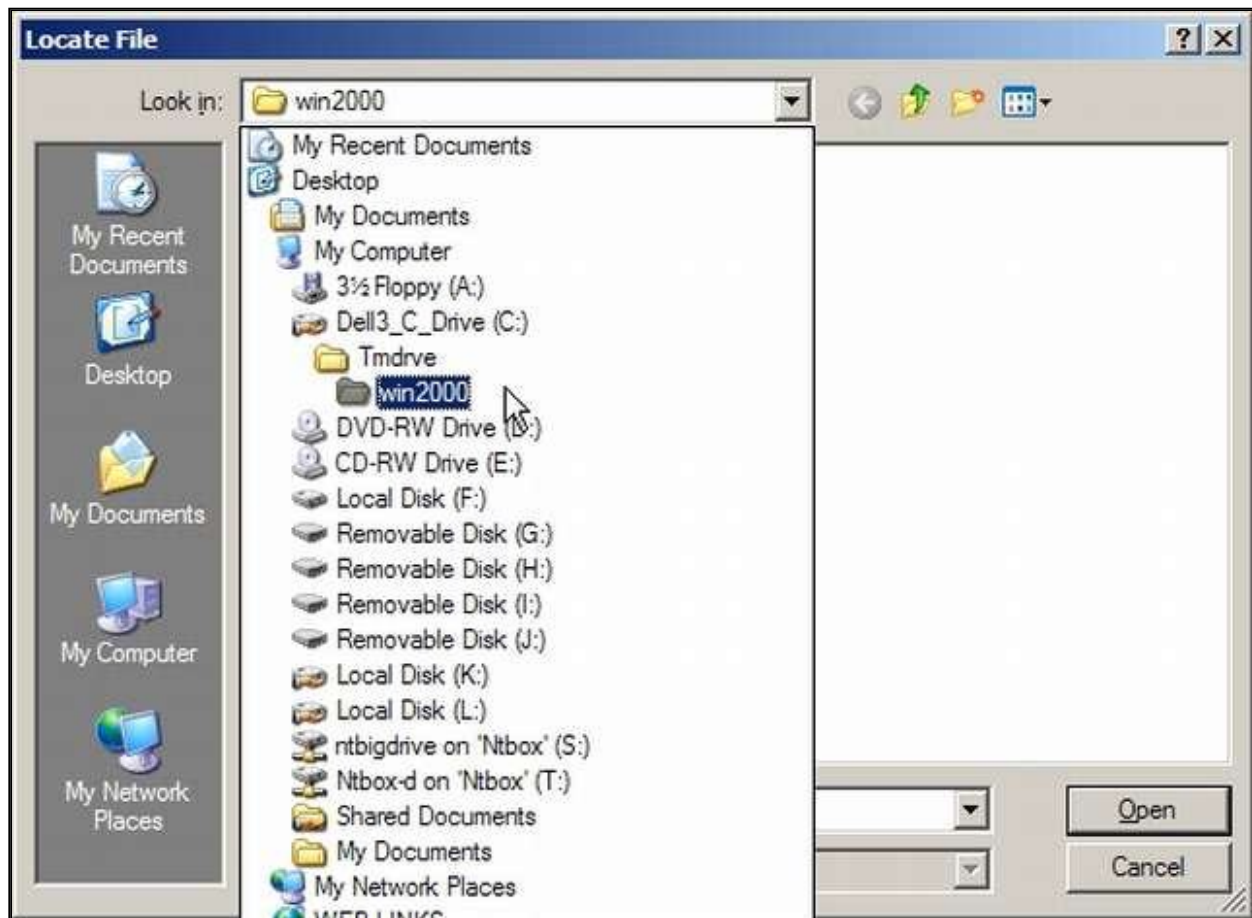
Windows will normally select LPT1: as the default printer port as most systems have only one parallel port installed. Adjust the setting if needed and then click NEXT



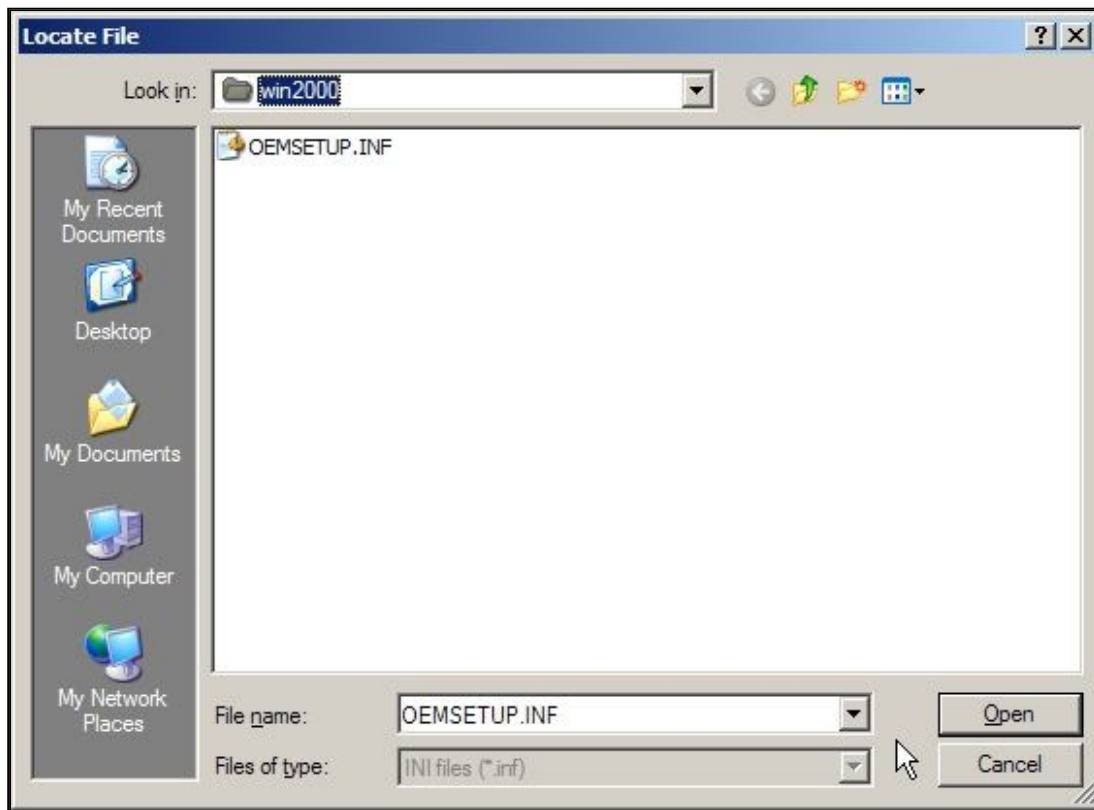
On the next screen, check the HAVE DISK option.



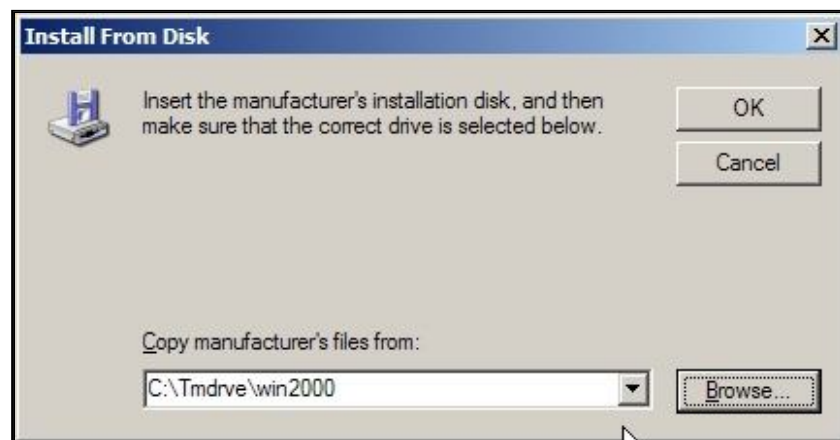
A file browse window should appear. Navigate to the c:\tmdrive\win2000 folder (use Win2000 even if you are running XP). Double-click on The WIN2000 folder.



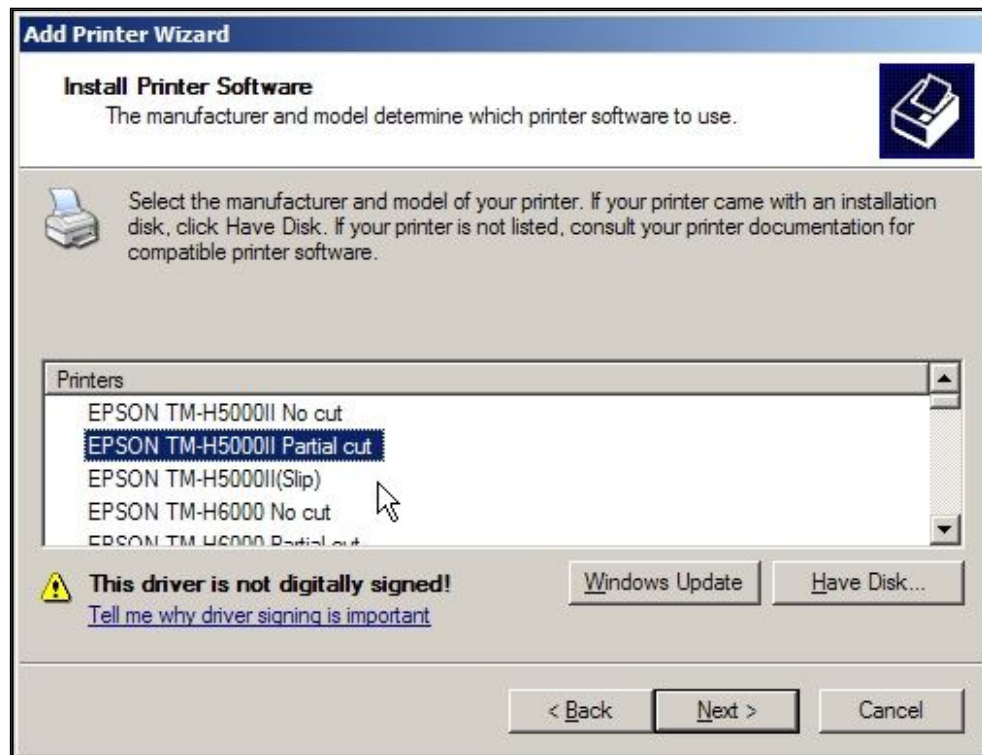
The following screen should then appear. Click on OPEN.



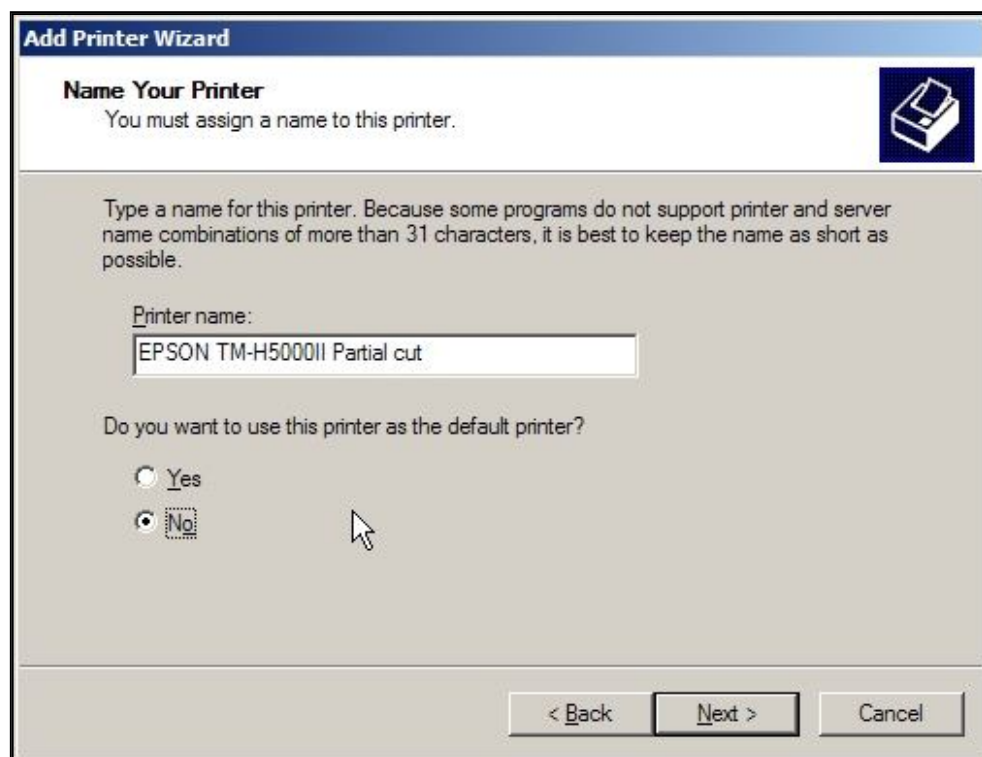
Click on OK.



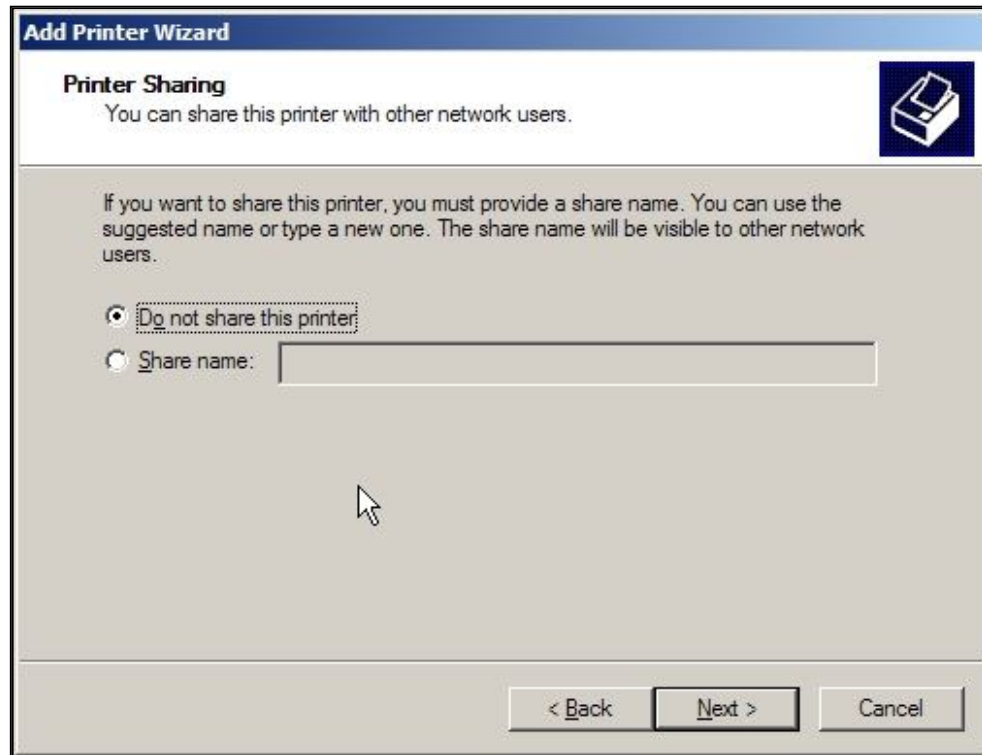
Then a list of printer types will appear. Select the TMH5000II (Partial Cut) open, and the click on NEXT



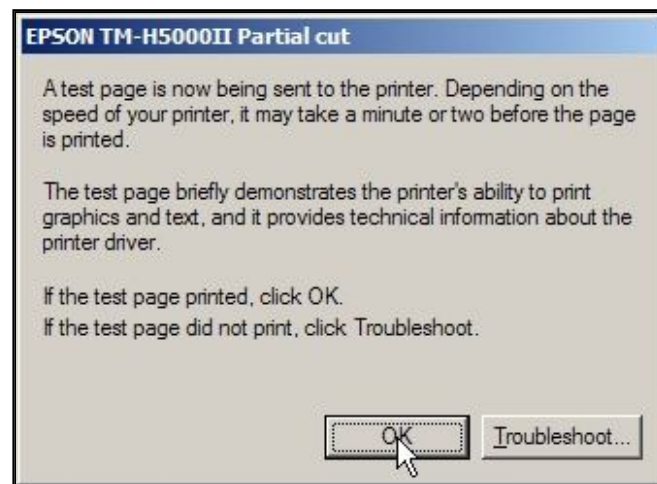
Leave the suggested printer name as is. Click on the "NO" option (this will NOT be your default Windows printer), then click on NEXT



Click on the DO NOT SHARE THIS PRINTER option and then click NEXT



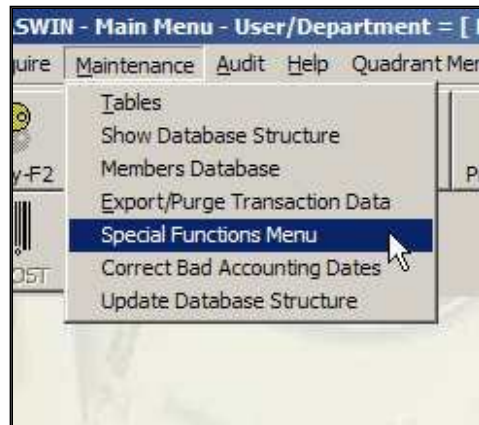
The system will then ask if you want a TEST PAGE. If you indicate that you do you should see a screen similar to this one.



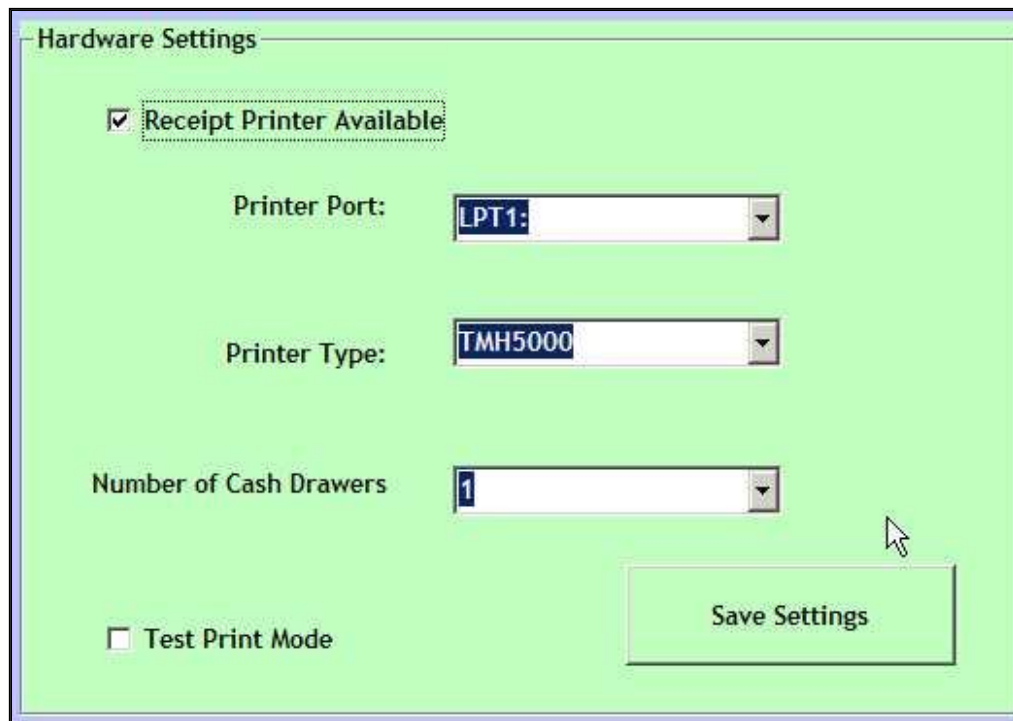
That's it for setting up the printer driver.

Telling the RASWIN program about your printer.

This the last and easiest step in configuring your printer. Using the MAINTENANCE MENU, Select the SPECIAL FUNCTIONS MENU.



On the left side of the screen you will see several options related to your printer.



Make sure the RECEIPT PRINTER AVAILABLE box is checked.

The printer type for the Epson Printers would be either the TMH5000 or THM6000.

If you have no cash drawer connected to your system, select the option for 0. Otherwise, select one (or two) drawers.

Make sure the test print mode option is unchecked. This allows you to process receipts without printing anything (including check endorsements) or opening the cash drawer. This mode is used mostly for testing.

When you are done adjusting the settings, click on the SAVE SETTINGS command button and then close the screen by clicking on the X in the top right corner of the screen.